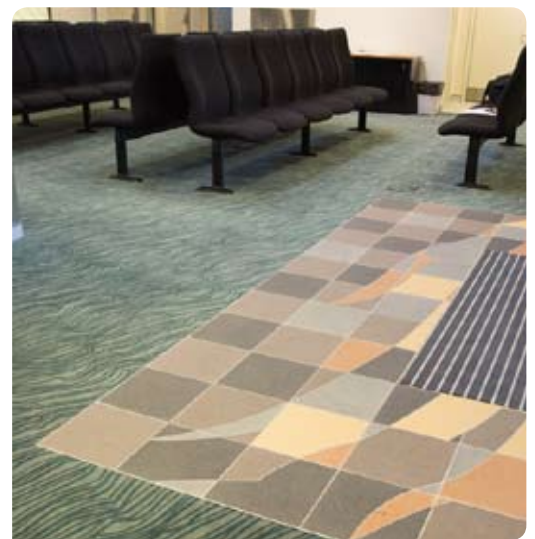


Sandgate Courthouse



Client	Department of Justice and Attorney-General
Number of artworks commissioned	1
Public Art project budget	\$38,400

Edges + Intersections

Location	Throughout Courthouse, 84 Keogh Street, Sandgate
Artist	Beverley Bloxham
Medium	Vitrified porcelain tiles, digiglass and dye injection carpet tiles
Size	Variable - tiles, carpet and glass
Artwork fabrication cost	\$25,000
Completion date	2007
Photos by	Isaac Brown

Artwork statement

The artwork for this project reflects the edge between the water and the land – the places where they intersect.

The very name Sandgate represents an edge – literally a gateway to the sand. Everywhere along the foreshore one sees the results of taming and containing the ocean: the wave's crash onto manmade groins and embankments; jetties thrust out into the bay. The lagoons, ancient water sources, are now celebrated in parks and with playgrounds, crossed by bridges, surrounded by shopping precincts and housing.

The courthouse can also be seen as a place of edges and intersections: a place where people attend to matters of law and, depending on their mission in that place, may find their lives altered by the results of their visit: an edge between 'before and after'.

This suite of artworks is designed to soften that edge – a time possibly tension-filled, waiting to hear the news of one's future.

The designs are all derived from imagery of the bay – ripple patterns of mud, sand and water – contained and altered by a geometry representing the built environment.

Designed to remove the intimidating institutional façade of previous generations of courthouses, these artworks are intended to have a calming effect on those who enter the building, whether the business is a mundane matter or one more serious.